



GMT MONTHLY MEMBERSHIP PROGRESS REPORT

Results as of: 6/30/2020

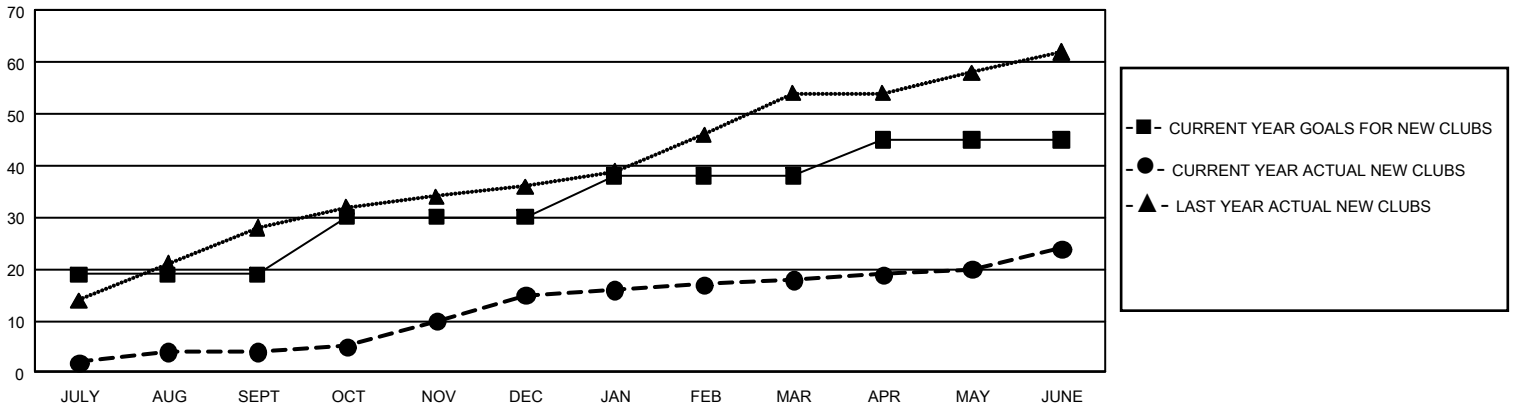
GMT Constitutional Area 6, Group I

GMT: OPEN

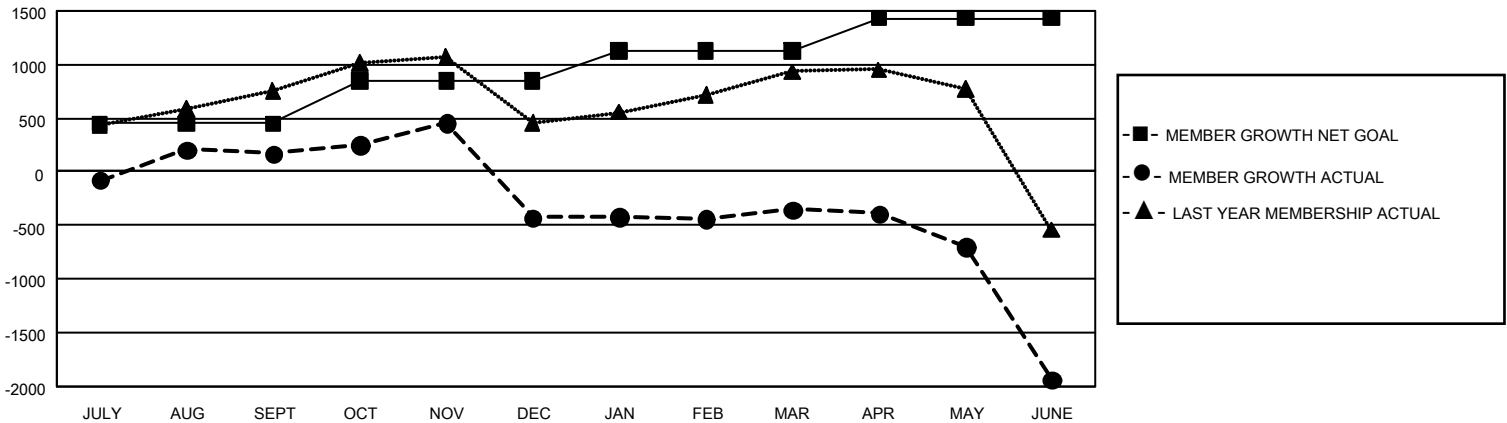
REPORT DOES NOT INCLUDE CLUBS IN UNDISTRICTED AREAS.

Clubs				Members			
RESULTS FOR 2019-2020				RESULTS FOR 2019-2020			
QUARTER	NEW CLUB GOAL	NEW CLUBS	DROPPED CLUBS	QUARTER	MEMBER GROWTH NET GOAL	MEMBER GROWTH ACTUAL	DROPPED MEMBERS ACTUAL (including transfers)
JULY/AUG/SEPT	57	4	3	JULY/AUG/SEPT	1,350	791	577
OCT/NOV/DEC	33	11	13	OCT/NOV/DEC	1,185	735	1,253
JAN/FEB/MAR	24	3	6	JAN/FEB/MAR	840	517	325
APR/MAY/JUNE	21	6	10	APR/MAY/JUNE	915	667	2,072

GOALS AND ACTUAL NEW CLUBS CUMULATIVE



GOALS AND ACTUAL MEMBERS CUMULATIVE



DROPPED CLUBS: 29	334 CLUBS OF 516 ADDED 1 OR MORE NEW MEMBERS	<u>GENDER DISTRIBUTION</u> MALE 12,564 (75.04%) FEMALE 4,180 (24.96%)
<u>DROPPED MEMBERS</u> DECEASED 63 CLUB CANCELLED 337 OTHER 3,827 <hr/> TOTAL 4,227	CLICK HERE FOR CUMULATIVE MEMBERSHIP DATA	TOTAL FAMILY UNIT MEMBERS 7,470 FAMILY MEMBERS PAYING HALF DUES 4,182